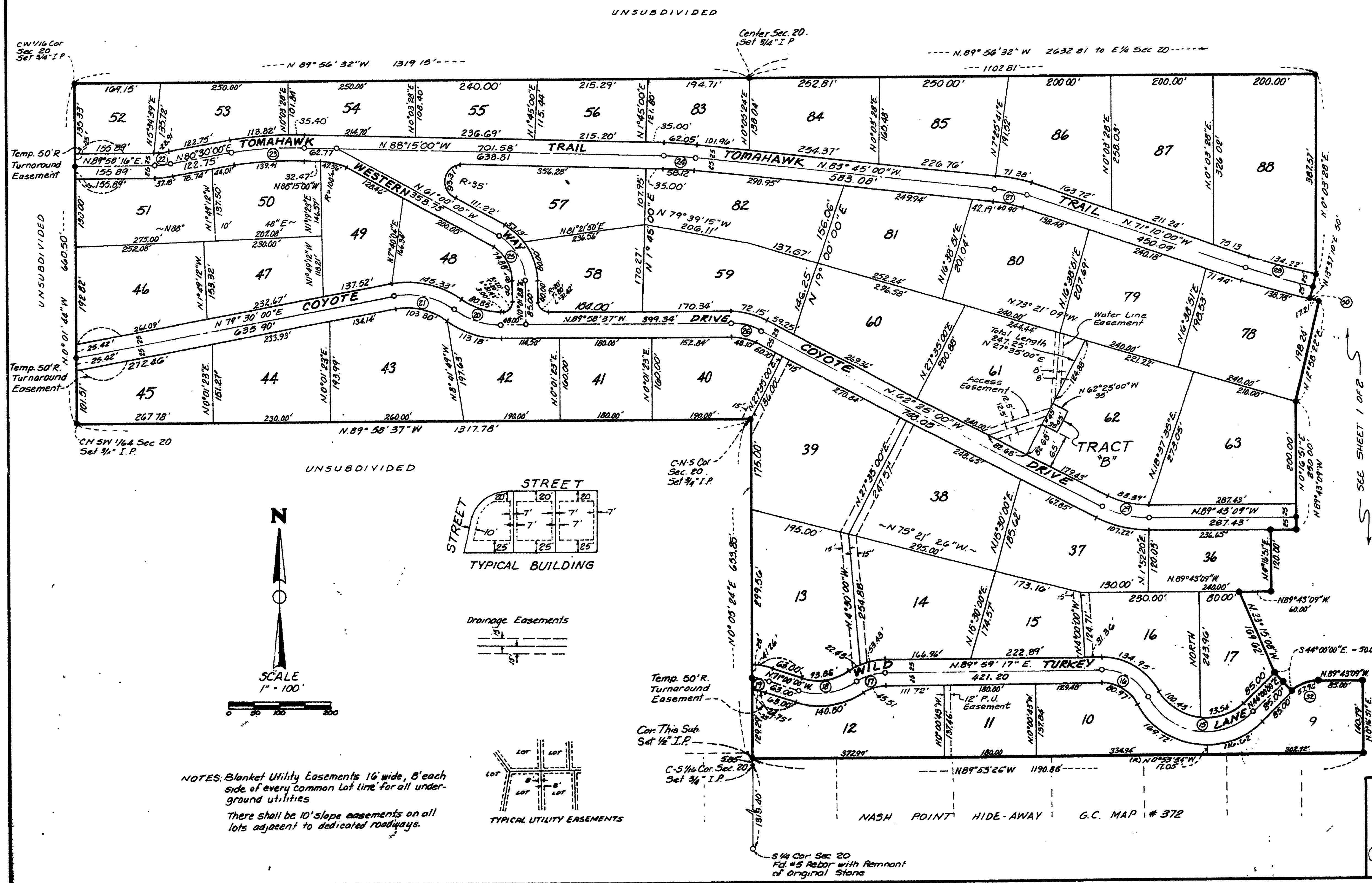
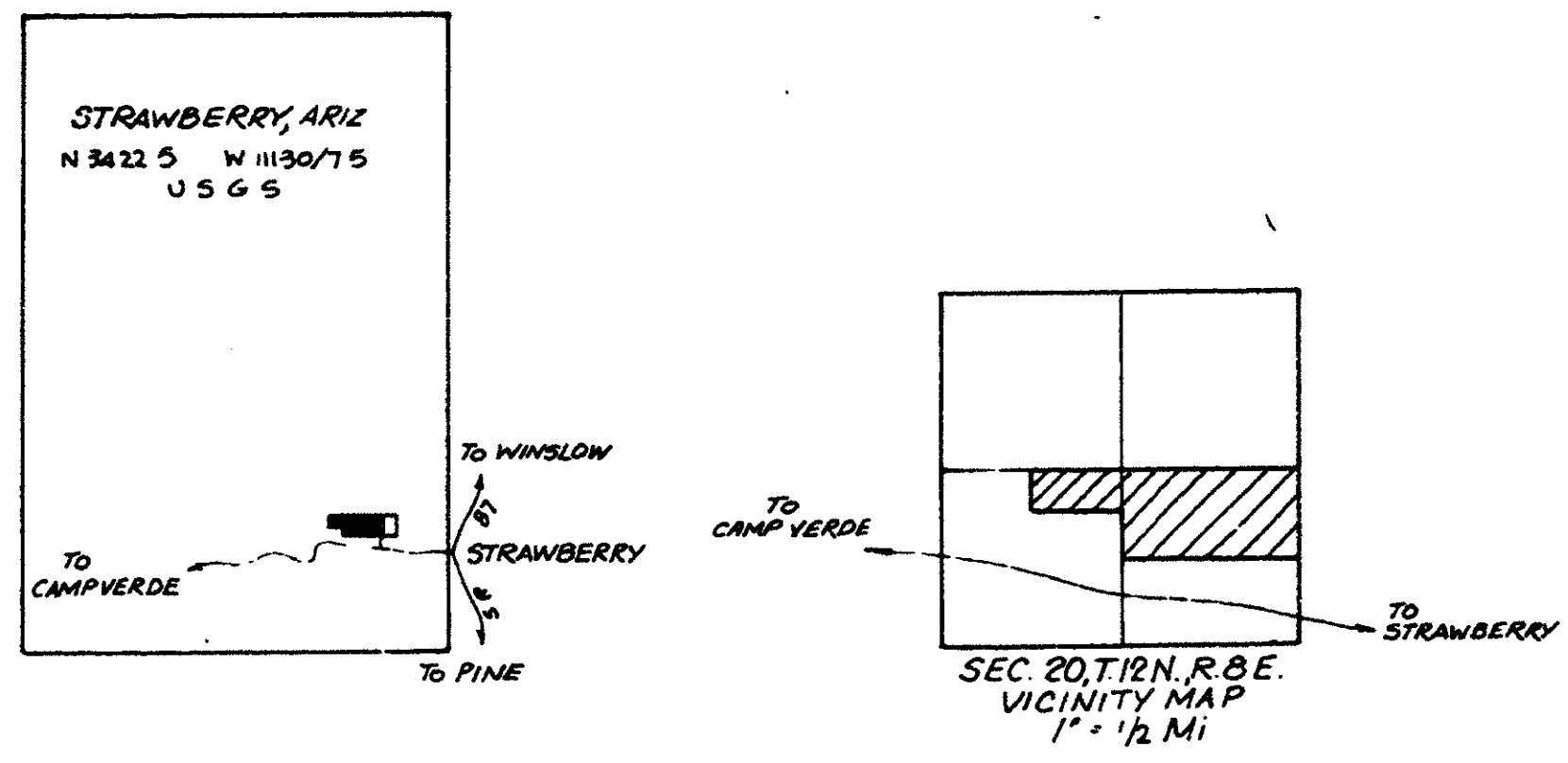


STRAWBERRY CREEK FOOTHILLS

(FORMERLY STRAWBERRY PINES UNITS II & III, AMENDED)

A SUBDIVISION OF A PORTION OF THE SOUTH 1/2 OF SECTION 20, T.12N., R.8E., G.S.R.B. & M., GILA COUNTY, ARIZONA

NO	Δ	R	TAN	L
15	105°50'46"	130.00'	172.04'	240.16'
16	91°51'29"	100.00'	59.92'	107.96'
17	34°46'07"	100.00'	31.31'	60.68'
18	59°46'50"	125.00'	63.39'	117.33'
19	18°54'36"	100.00'	16.65'	35.00'
20	37°03'26"	150.00'	50.27'	97.02'
21	47°34'49"	150.00'	66.13'	124.57'
22	9°28'16"	200.00'	16.57'	33.05'
23	11°15'00"	735.00'	72.39'	144.32'
24	4°30'00"	765.00'	30.06'	60.08'
25	61°01'23"	100.00'	58.93'	106.51'
26	27°33'37"	125.00'	30.66'	60.13'
27	12°35'00"	300.00'	53.08'	65.89'
28	5°12'50"	1500.00'	68.30'	136.50'
29	27°18'09"	200.00'	48.57'	95.30'
30	0°38'48"	1525.00'	8.61'	17.21'
32	44°16'51"	75.00'	30.12'	57.96'



DASHNEY, STEELE & JENSEN, INC.
CONSULTING ENGINEERS

505 E. THOMAS ROAD, SUITE 10
PHOENIX, ARIZONA 85016
957-7920

505 W. MAIN STREET
PHOENIX, AZ 85041
474-5315

STRAWBERRY CREEK FOOTHILLS
(FORMERLY STRAWBERRY PINES UNITS II & III, AMENDED)

DES.	DR.	CHK.	TOTAL AS
DATE	DATE	DATE	NO SHEETS
			2 2

SCALE 1" = 100'

572A